



## BLUE LIGHT IS MADE UP OF BOTH:

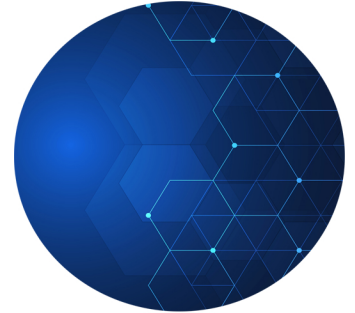
- Harmful blue-violet light (380-455 nm)
- Beneficial blue-turquoise light (465-495 nm)

### Order your Blue Guard demo kit today!

Includes: Blue light pen,  
Blue Guard demo,  
and clear demo sample

**\$10**

Thanks to a combination of carefully selected molecules at the very heart of the lens, **Blue Guard** efficiently filters out harmful blue-violet light while letting beneficial blue-turquoise light pass through.



## Blue Guard Availability

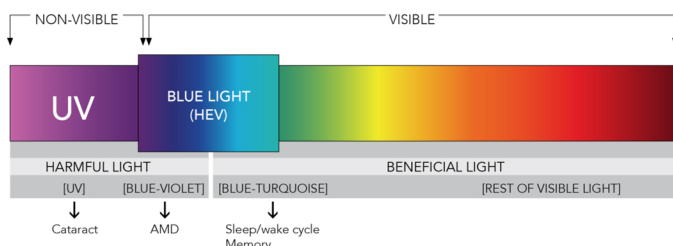
- Materials:** CR39, Trivex, Polycarbonate, and 1.67
- Single Vision, Heritage, Legacy, and Shamir progressives
- Compatible with our house and Crizal AR coatings

## Blue Guard Benefits

- HEV\* Blue Light Filtering:** Up to 20% indoors and outdoor protection
- UV Protection:** 100% from direct sunlight
- Glare & Reflection Reduction:** Best clarity when partnered with our premium AR coatings
- Comfort Recognition:** Clear lenses that gives just the right amount of protection against HEV blue light while maintaining contrast sensitivity, ensuring high visual clarity, and color perception



## Understanding The Color Spectrum



\*HEV blue light is designated as 380-455 nm based on the visible light spectrum of 380-780 nm.

Light is made up of a color spectrum. Each color is created by different energy wavelengths measured in nanometers (nm). The high-energy end of the visible light spectrum is known as HEV Blue Light. It is the violet/blue band of the color spectrum and may have an impact on eyestrain and overall eye health.

