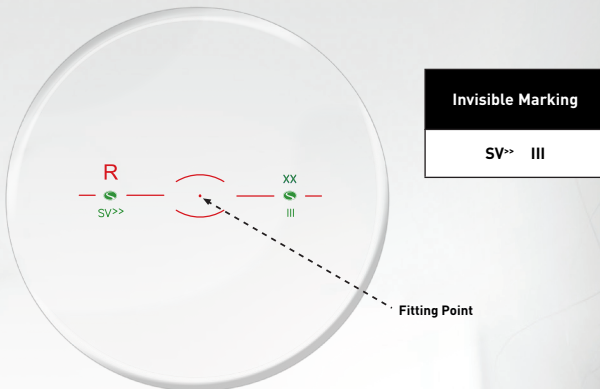


Shamir Autograph III® – SV

Experience the Difference
with Digital

TECHNICAL INFORMATION



Ink Marking: Red • Invisible Marking: Green

Material Availability:

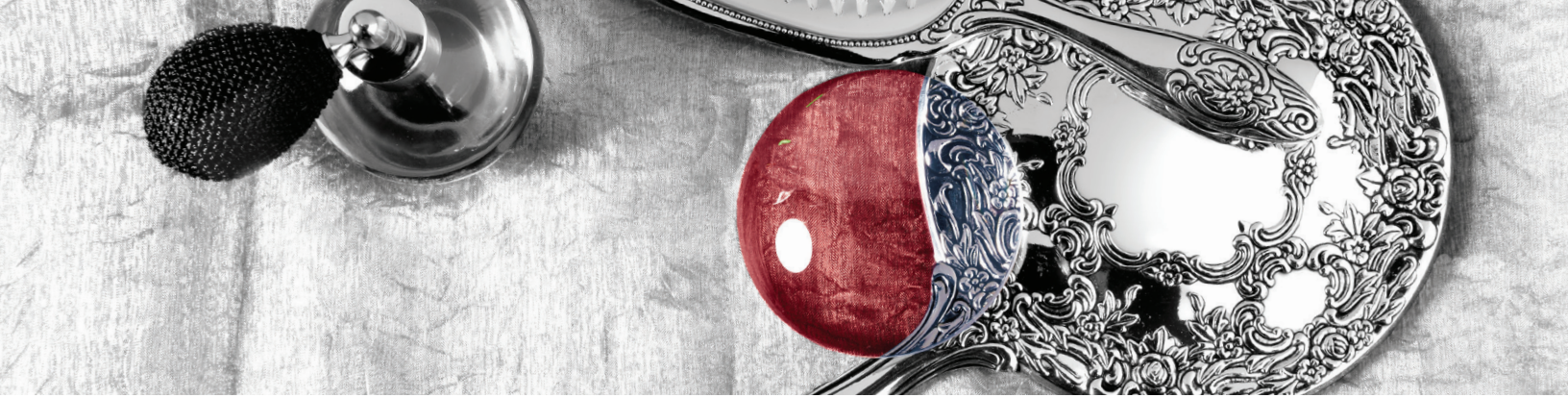
Material	Power Range	Cylinder
1.5 Hard Resin (C,TV,T7,P,TX,D)	-12.00 to +7.25	to -6.00
DLC™ Trivex™ (C,TV,T7,P,TX,BZ)	-14.00 to +8.00	to -6.50
1.56™ (B)	-14.00 to +8.50	to -6.75
NXT™ (P)	+1.00 to +8.00	to -6.50
1.6 SuperLite™ (C,T7,P,TX)	-14.00 to +8.75	to -7.00
1.67 SuperLite™ (C,T7,P,TX,BZ)	-16.00 to +16.00	to -8.00
1.74 SuperLite™ (C,T7)	-20.00 to +13.50	to -9.00
Polycarbonate (C,TV,T7,P,TX,D,BZ)	-14.00 to +8.75	to -7.00

POWER RANGE IS DETERMINED BY SHAMIR CERTIFIED BLANK RANGE PRISM TO 10 DIOPTERS IN EACH QUADRANT

LEGEND:

- C-Clear
- T7-Transitions® Signature7™
- PH-Photochromic
- P-Polarized
- BZ-Blue Zero™
- TV-Transitions® Vantage™
- TX-XTRActive™
- B-BluTech (Indoor & Outdoor)
- D-Drivewear

WARNING: Polycarbonate contains a chemical known to the state of California to cause birth defects or other reproductive harm.



Fitting, Surfacing & Final Inspection

Shamir Autograph III® - SV is an aspheric lens. Its ocular surface is aspherically designed and processed with Freeform® Technology. This ensures an atoric ocular surface with enhanced optical and cosmetic properties.

The lens will be laser engraved, these engravings are 34mm from center to center of the two laser engravings. The fitting point and the PRP (MRP) are located at the same position, directly between and in the center of the laser engravings.

FITTING:

A monocular PD and a fitting height should be taken for the Shamir Autograph III® - SV lens. This will ensure that the design is placed directly in front of the pupil. By design, the OC will not be at the fitting height, unless the fitting height is equal to the mechanical center of the frame.

SURFACING:

The lens should be blocked on geometric center and the fitting height should be specified.

CHECKING POWER AND PRISM AFTER SURFACING:

The laser engravings should be marked, and using the centration chart, the fitting point should also be marked. The power and the amount of prescribed prism, should there be any, are checked at the fitting point. Also, remember that the lens has been cosmetically balanced so there may be vertical prism here, similar to prism thinning in a progressive. The amount of prism ground to achieve this will not exceed 2.5 diopters and should be equivalent in each eye even if the powers are dissimilar.

LAYOUT FOR EDGING:

These lenses should be laid out for edging as if it were a progressive. The engraving marks should be on the 180 line and the fitting cross moved to correspond to the **PD** and **Fitting Height**.

FINAL INSPECTION:

The laser engravings are marked and the fitting point is marked. The PD is checked by measuring the distance between the fitting points (not the OC) the fitting height is measured from the fitting point. The power, Rx Prism and vertical imbalance are all checked at the fitting point.

How to Order Shamir Autograph III® - SV

Provide the following information:

- Supply the Doctors refracted Rx
- Frame Data: (A, B, DBL) or frame tracer file
- Fitting height & Mono PD (far)
- Panoramic angle
- Pantoscopic tilt (patient should hold his head in a natural position and look straight ahead during measurement)
- Fitted vertex distance

Maximum measurements for maximum lens performance.

For maximum lens performance, Shamir strongly recommends providing all the above As-Worn measurements.

Technical Inquiries: 888.370.0736



www.facebook.com/ShamirInsight



www.twitter.com/ShamirInsight

AU3-TEC-SIV-032816



ReCreating Perfect Vision®

www.shamir.com 877.514.8330